



Date: 3/8/2022

MONTGOMERY COUNTY COVID-19 UPDATE

MONTGOMERY COUNTY – Montgomery County Public Health District, in conjunction with the Montgomery County Office of Homeland Security and Emergency Management, continues to encourage eligible populations to be fully vaccinated and receive a booster dose of the COVID-19 vaccine. Those who have been vaccinated and/or boosted tend to have mild symptoms and the majority can recover at home. Need to find a vaccine or a vaccine booster shot? Click here for vaccine sites: <https://www.vaccines.gov/>.

If you are diagnosed with or exposed to COVID-19 , please follow the CDC guidance here: <https://www.cdc.gov/media/releases/2021/s1227-isolation-quarantine-guidance.html>.

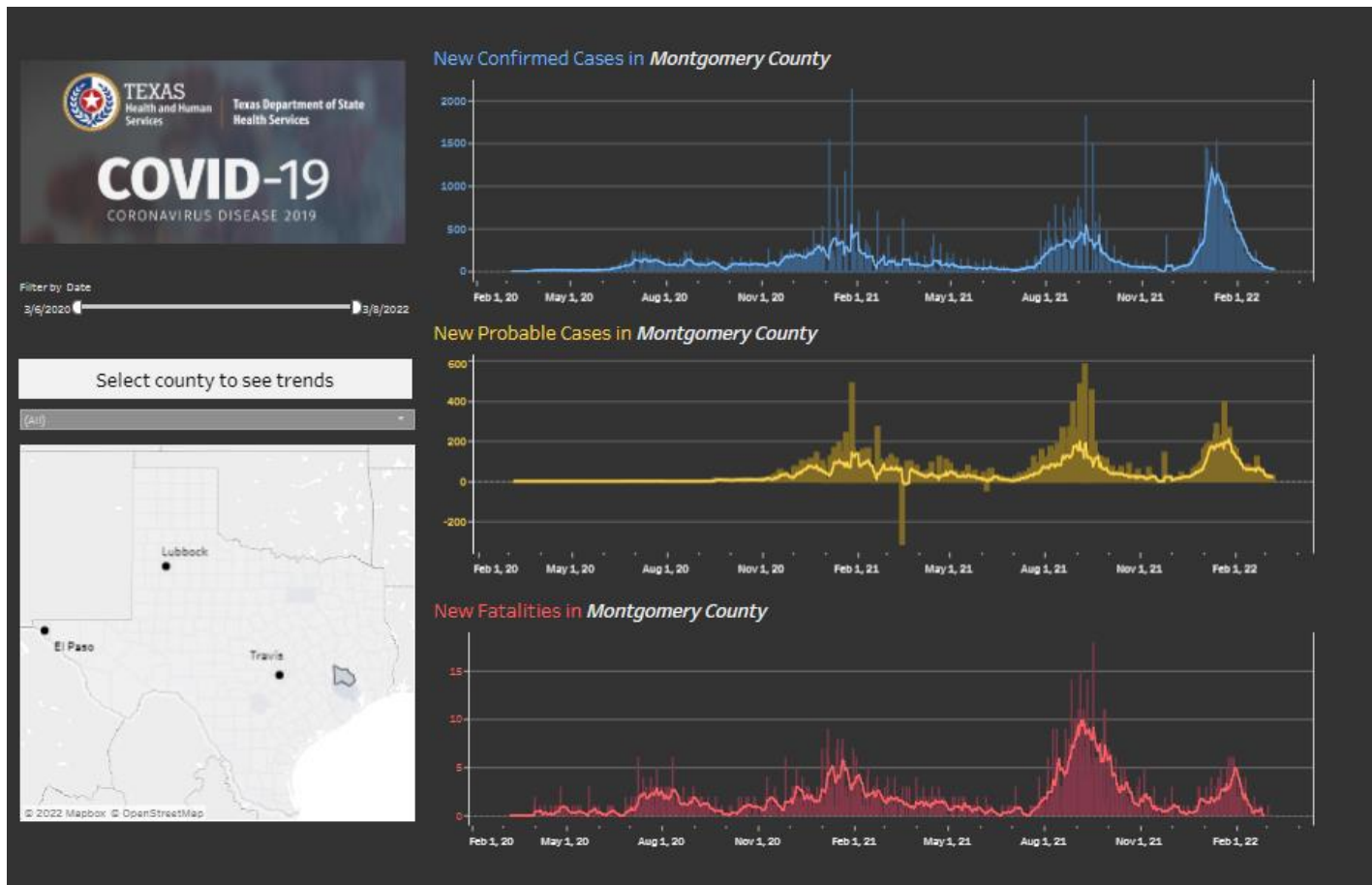
MCPHD reports weekly on Tuesdays, but DSHS updates daily at this link: <https://www.arcgis.com/apps/dashboards/45e18cba105c478697c76acbbf86a6bc>.

Since our last report on 3/1/2022:

- Total cases of COVID-19 increased by 258 to 135,628. **Total cases include confirmed (PCR testing) and probable (antigen testing) cases.*
- Deaths of Montgomery County residents have increased by 6 to 1,266 since the start of the pandemic in March 2020, according to data from DSHS.
- 43 confirmed cases of COVID-19 are currently hospitalized in Montgomery County. SETRAC data for regional hospitalizations can be found here: <https://bit.ly/3jwhdiV>.

The Testing Positivity Rate for Montgomery County has decreased to 8%, down from 9% last week.

Source: UT Health, School of Public Health



The COVID-19 dashboard for Montgomery County can be found here: <https://coronavirus-response-moco.hub.arcgis.com/>.